

MPS Catalog Number:
Date:

S1 40 90 031 MX AL 019
01/23/2014

END FITTINGS

Tower End Fitting: Y-Clevis (Forged Steel)
Line End Fitting: Eye (Forged Steel)

MATERIAL

Corona Ring (Tower): None
Corona Ring (Line): None
Corona Rings are recommended for applications of 230 kV and above
Number of Sheds: 9 large 10 standard
Rod Diameter: 16 mm
Weight Estimate: 8.5 lbs 3.9 kg

DIMENSIONAL VALUES

Section Length (L): 43.8 in 1,113 mm
Rubber Length (X): 30.5 in 775 mm
Standard Shed Height (P1): 1.5 in 38 mm
Large Shed Height (P2): 2 in 51 mm
Projection Ratio (S/P): - 1.5
Shed Spacing (S): 3 in 76 mm
Dry Arc Distance: 32.8 in 833 mm
Leakage Distance: 85.2 in 2,164 mm

ELECTRICAL VALUES

60 Hz Dry Flashover:	327 kV	Min. Withstand:	304 kV
60 Hz Wet Flashover:	295 kV	Min. Withstand:	257 kV
Pos. Critical Impulse Flashover:	566 kV	Min. Withstand:	487 kV
Neg. Critical Impulse Flashover:	605 kV	Min. Withstand:	531 kV

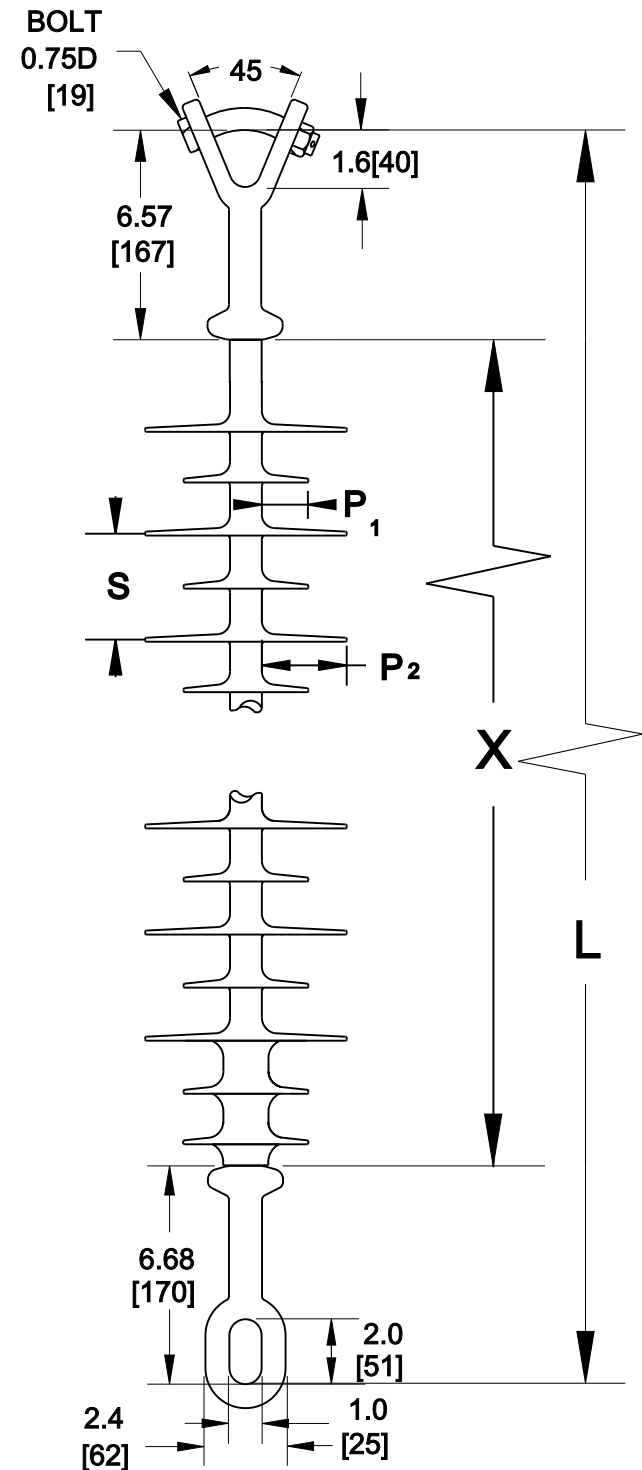
MECHANICAL VALUES

Specified Mech. Load (SML):	25,000 lbs	111.2 kN
Routine Test Load (RTL):	12,500 lbs	55.6 kN

This drawing contains confidential information that is property of MacLean Power L.L.C ('MacLean'). Use of MacLean's confidential information without MacLean's express written consent is strictly prohibited and may expose you to legal liability. If you believe that you received this material in error, please destroy it or return it to 'MacLean Power, L.L.C., 7801 Park Place Rd, York, SC, 29745, USA.'

Dimensions: inches [millimeters]

Note: Drawing not actual depiction of insulator appearance



Silicone Rubber Sheath & Sheds
Complies with applicable ANSI and IEC standards.